

APPENDIX 14: 07 TIMBO RIVER PRINCIPAL BASIN TABLES, FIGURES AND MAPS



07 TIMBO RIVER PRINCIPAL BASIN

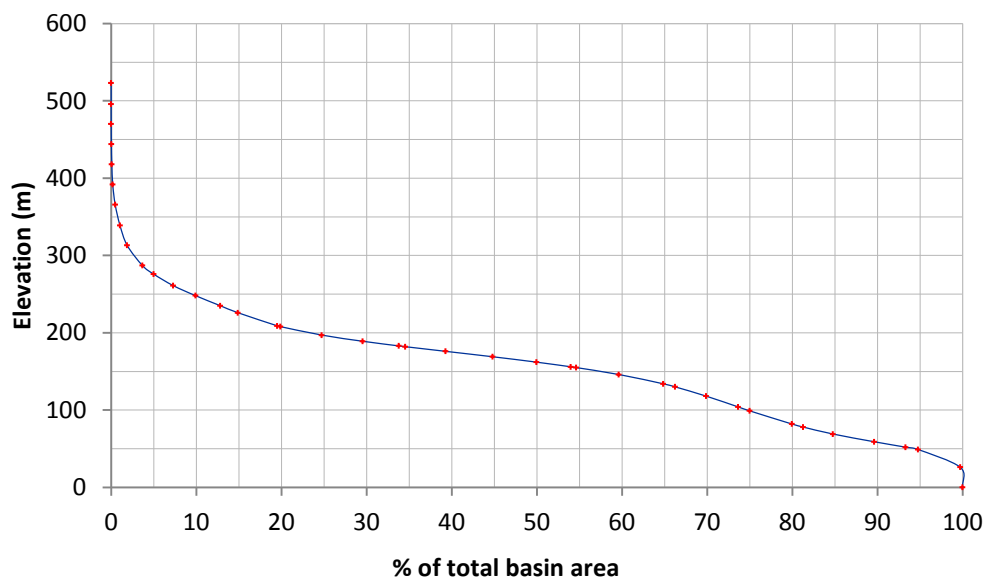
Morphometric parameters of principal basin

Basin area	km ²	3,196
Main river length	km	183
Elevation at main river source	m	280
Minimum basin elevation	m	0.0
Maximum basin elevation	m	510
Basin length	km	106
Form factor		0.28
Elongation ratio		0.60

Classified Tributaries

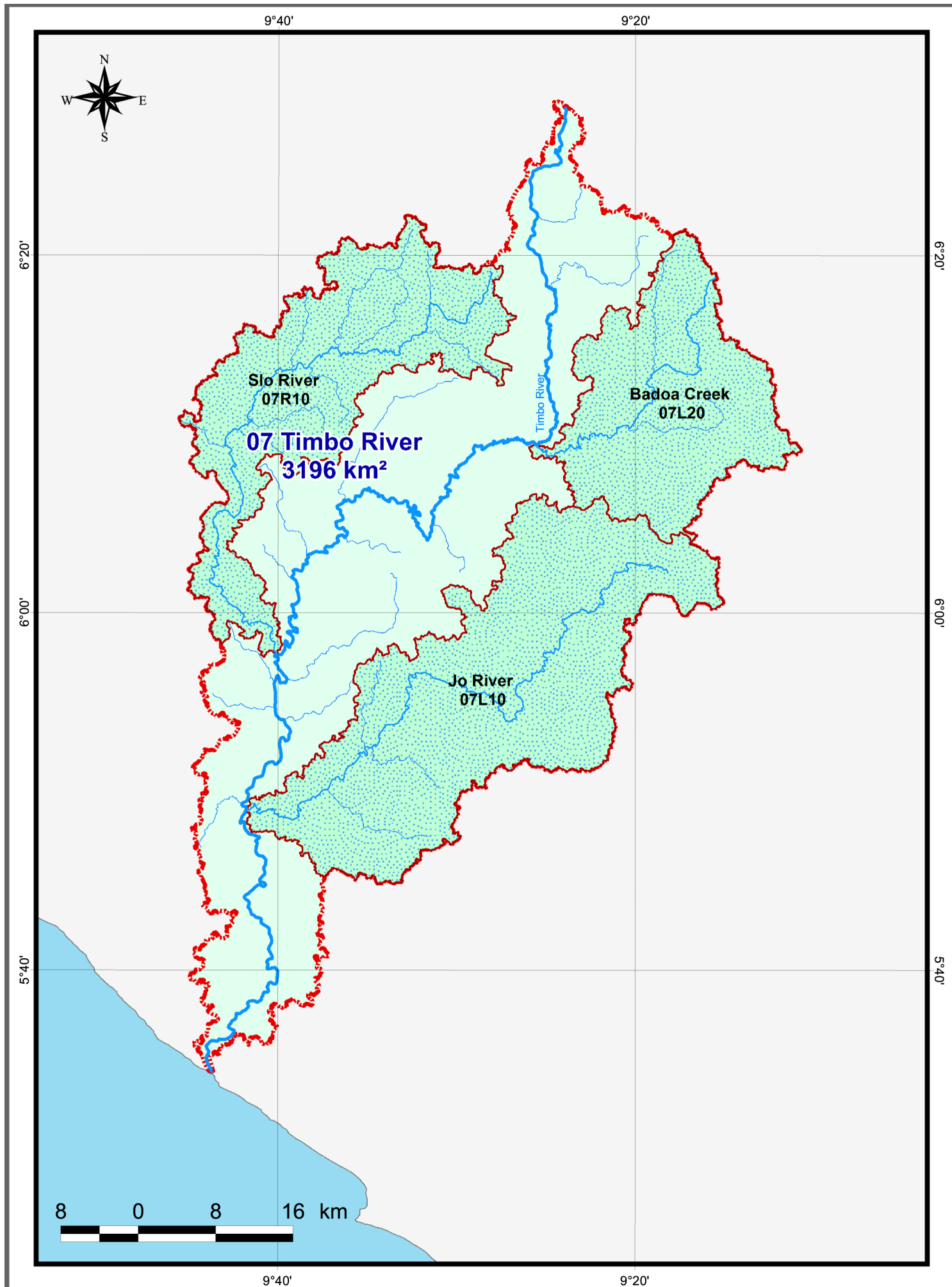
Subbasin Code	Subbasin Name	Basin area (km ²)	Tributary length (km)
07L20	Badoa Creek	434	42
07R10	Slo River	533	84
07L10	Jo River	819	86

Hypsometric curve - Basin 07 Timbo



07 TIMBO RIVER PRINCIPAL BASIN

Coding		Identification		Coordinates			Distance (km)		Basin area (km ²)	
Map Label	Basin Code	Point	Name of River Reach	Latitude (N)	Longitude (W)	Flow direction	Along main river from source	Along tributary from source	Main River	Tributary
1	07	Source of Timbo River	Timbo River	6.472	9.400	↓				
2	07	Confluence with Badoa Creek	Timbo River	6.157	9.425	↓	45		308	
	07L20	Outlet of Badoa Creek to Main Stream	Badoa Creek	6.157	9.425	←		42		434
3	07	Confluence with Slo River	Timbo River	5.962	9.669	↓	117		1,319	
	07R10	Outlet of Slo River to Main Stream	Slo River	5.962	9.669	→		84		533
4	07	Confluence with Jo River	Timbo River	5.817	9.697	↓	141		2,145	
	07L10	Outlet of Jo River to Main Stream	Jo River	5.817	9.697	←		86		819
5	07	Atlantic Ocean	Timbo River	5.572	9.729	↓	183		3,196	



Principal Basin No. 07 - Timbo River - 3 196 sqkm

scale: 1: 500 000

