

APPENDIX 12: 05 FARMINGTON RIVER PRINCIPAL BASIN TABLES, FIGURES AND MAPS



05 FARMINGTON RIVER PRINCIPAL BASIN

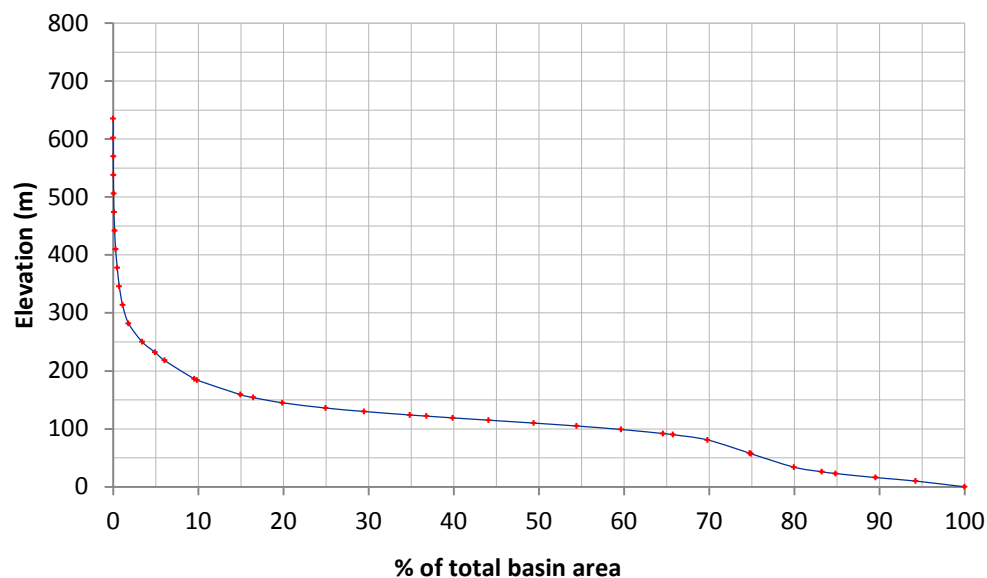
Morphometric parameters of principal basin

Basin area	km ²	5,649
Main river length	km	153
Elevation at main river source	m	300
Minimum basin elevation	m	0.0
Maximum basin elevation	m	620
Basin length	km	91
Form factor		0.63
Elongation ratio		0.90

Classified Tributaries

Subbasin Code	Subbasin Name	Basin area (km ²)	Tributary length (km)
05L30	Bolo River	398	37
05L20	Nia Creek	1,078	72
05L10	Wo River	659	58
05R10	Du-Junk (Bo) River	1,532	154

Hypsometric curve - Basin 05 Farmington



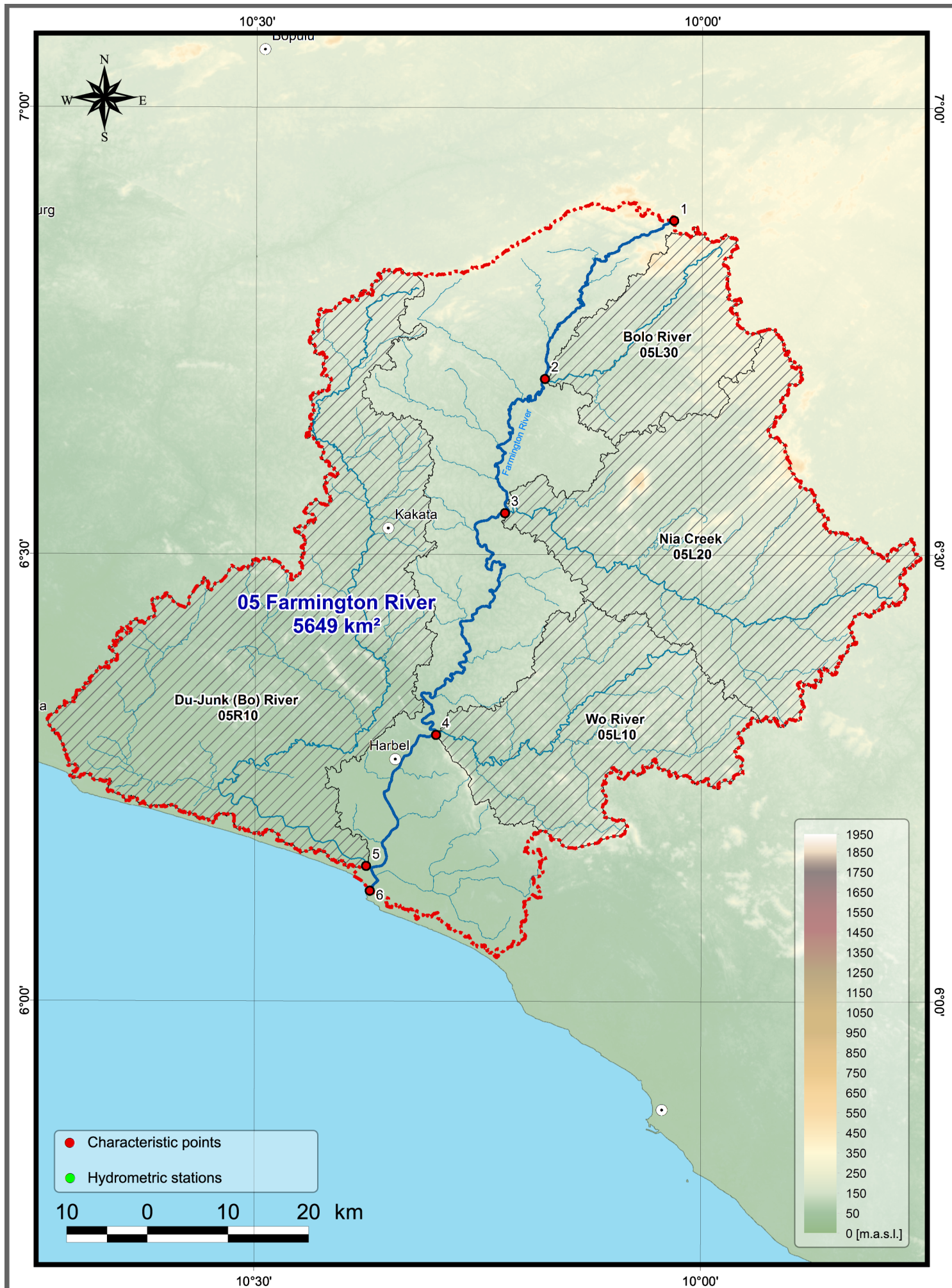
05 FARMINGTON RIVER PRINCIPAL BASIN

Coding		Identification		Coordinates			Distance (km)		Basin area (km ²)	
Map Label	Basin Code	Point	Name of River Reach	Latitude (N)	Longitude (W)	Flow direction	Along main river from source	Along tributary from source	Main River	Tributary
1	05	Source of Farmington River	Farmington River	6.874	10.032	↓	-			
2	05	Confluence with Bolo River	Farmington River	6.697	10.176	↓	33		278	
	05L30	Outlet of Bolo River to Main Stream	Bolo River	6.697	10.176	←		37		398
3	05	Confluence with Nia, Din Creeks	Farmington River	6.547	10.221	↓	64		1,145	
	05L20	Outlet of Nia, Din Creeks to Main Stream	Nia Creek	6.547	10.221	←		72		1,078
4	05	Confluence with Wo River	Farmington River	6.298	10.298	↓	126		2,618	
	05L10	Outlet of Wo River	Wo River	6.298	10.298	←		58		659
5	05	Confluence with Du-Junk (Bo) River	Farmington River	6.152	10.375	↓	149		3,476	
	05R10	Outlet of Du-Junk (Bo) River to Main Stream	Junk River	6.152	10.375	→		154		1,532
6	05	Atlantic Ocean	Farmington River	6.124	10.371	↓	153		5,649	



Principal Basin No. 05 - Farmington River - 5 649 sqkm

scale: 1: 600 000



Principal Basin No. 05 - Farmington River - 5 649 sqkm

scale: 1: 600 000